

# GENESIS G70 SHOOTING BRAKE



All prices are retail prices of Genesis Motor Deutschland GmbH with delivery and registration fees, including VAT. Including our 5 Year Care Plan and 5 years' warranty, according our 5 year Care Plan and warranty terms and conditions.

## GENESIS G70 SHOOTING BRAKE

Model Line

Engine

Colour

Optional Equipment

Model Line	Price	Main standard features
Premium	<p>Diesel 2.2 8AT RWD 147 kW (200 PS) L8G1J / DX5</p> <p><b>46,180 €<sup>1</sup></b></p> <p>Genesis G70 Shooting Brake 2.2D RWD 147 kW (200 PS) diesel, 8-speed gearbox - energy consumption combined: 7.1l/100 km; CO<sub>2</sub>-emissions combined: 186 g/km; CO<sub>2</sub>-class: G; (according to WLTP)<sup>2</sup></p>	<p><b>Exterior</b></p> <p>Dual front LED headlamps (low &amp; high projection) including high beam assist • Dual rear muffler (Single twin muffler for diesel) black paint &amp; chrome coating (ONLY ON PETROL) • Rear diffuser in body color (ONLY ON PETROL) • Electrochromatic outside rearview mirror • LED Daytime Running Light (DRL) • LED rear stop lamp • LED rear fog lamps • LED rear combination lamp • Lighting backup guide-lines • Electrochromatic outside rearview mirror with electrical folding and heating • Outside door handles in body color • Puddle lamp with logo • Upper chrome radiator grille (only for pearl or metallic exterior color) • Rear door glass + backlite glass (solar + privacy)</p>
		<p><b>Wheels</b></p> <p>• Brembo premium brake • Alloy wheels 18 inch (Light Metallic) • Tyre pressure monitoring system</p>
		<p><b>Interior</b></p> <p>Centre armrest • Console storage box • Drink holder at centre armrest • Leather knob • Perforated leather with metal grain steering wheel • Soft paint interior trim • Fabric headlining • Fabric A/B/C pillars • Sunvisor (driver &amp; passenger)</p>
		<p><b>Seats</b></p> <p>Electric lumbar support (driver) • Electric seat adjustment (up/down/back/forth) • Electric height adjustment (driver) • Leatherette dashboard • Leatherette seat cover • 40:20:40 back folding for rear seats • Heated seats (front)</p>
		<p><b>Safety</b></p> <p>Driver &amp; passenger airbag • Front thorax &amp; pelvis, rear thorax &amp; side curtain (FF &amp; RR) airbag • Driver knee airbag • Centre side (front) airbag • ABS + ESC + HAC (Hill Assistant Control) + MCB (Multi-Collision Brake) • eCall</p>
		<p><b>Advanced safety</b></p> <p>SCC (Smart Cruise Control) with stop &amp; start • Rear BCA (Blind-spot Collision-avoidance Assist) • LKA (Lane Keeping Assist) • FCA (Forward Collision-avoidance Assist) • ISLA (Intelligent Speed Limit Assist) • MSLA (Manual Speed Limit Assist) • LFA (Lane Following Assist) • HDA (Highway Driving Assist)</p>
		<p><b>Infotainment</b></p> <p>10.25 inch screen with navigation, DAB radio &amp; Genesis Connected Services • Apple Carplay &amp; Android Auto • Speakers front door • Speakers rear door low • Tweeter • Steering wheel audio remote control • Bluetooth • Voice recognition</p>
		<p><b>Convenience</b></p> <p>Manual tilt &amp; telescopic steering wheel • EPB (Electric Parking Brake) with autohold • ISOFIX child anchor: upper &amp; lower (rear) • Temporary Mobility Kit (TMK) • Auto headlights &amp; dusk sensor • Front side laminated glass • Windshield acoustic film • Smart key &amp; button start • Immobilizer • Central door lock driver's control • 8 inch dashboard cluster TFT display • Electrochromatic interior mirror (ECM) with homelink • Paddle shifter • Front &amp; rear parking sensors • RVM (Rearview Monitor camera) with dynamic guidelines on screen • Rain sensor • 12 V power outlet for front • USB charger console inside (1 port) • Wireless phone charger • 1 USB charger in front • Rear USB charger console outside (2 ports) • Front air condition with dual zone adjustment • Auto window defogger • Auto up/down windows • Seat occupant detection • Premium interior cabin filter • Air purification • Electric rear tailgate opening</p>
	<p>Petrol 2.0T Plus 8AT RWD 180 kW (245 PS) L8G1J / GX5</p> <p><b>48,080 €<sup>1</sup></b></p> <p>Genesis G70 Shooting Brake 2.0T RWD 180 kW (245 PS) petrol, 8-speed gearbox - energy consumption combined: 9 l/100 km; CO<sub>2</sub>-emissions combined: 204 g/km; CO<sub>2</sub>-class: G; (according to WLTP)<sup>2</sup></p>	

<sup>1</sup> All prices are retail prices of Genesis Motor Deutschland GmbH with delivery and registration fees, including VAT.

<sup>2</sup> For more information on official fuel/power consumption and CO<sub>2</sub>-emission data for new cars, please refer to the "Guide on the Fuel Economy, CO<sub>2</sub>-Emissions and Power Consumption of All New Passenger Car Models Offered for Sale on the German Market" published free of charge by DAT Deutsche Automobil Treuhand GmbH, Hellmuth-Hirth-Straße 1, D-73760 Ostfildern, Germany, <https://www.dat.de/co2>.

The consumption and emission values shown on the Genesis website are based on the Worldwide Harmonised Light Vehicles Test Procedure (WLTP). Further information on the WLTP measurement procedures can be found at <https://www.genesis.com/de/de/wltp.html>.

Model Line	Price	Sport includes main standard features of Premium	
Sport	<p>Diesel 2.2 8AT RWD 147 kW (200 PS) L8G1J / DX6</p> <p><b>49,080 €<sup>1</sup></b></p> <p>Genesis G70 Shooting Brake 2.2D RWD 147 kW (200 PS) diesel, 8-speed gearbox - energy consumption combined: 7.1 l/100 km; CO<sub>2</sub>-emissions combined: 186 g/km; CO<sub>2</sub>-class: G; (according to WLTP)<sup>2</sup></p>	Exterior	Sport appearance • Radiator grill mesh dark tinted • Radiator surrounding mold dark polished chrome • DLO molding dark polished stainless steel • Side mirror dark polished chrome
	<p>Diesel 2.2 8AT AWD 147 kW (200 PS) L8G1K / DX8</p> <p><b>51,180 €<sup>1</sup></b></p> <p>Genesis G70 Shooting Brake 2.2D AWD 147 kW (200 PS) diesel, 8-speed gearbox - energy consumption combined: 7.8 l/100 km; CO<sub>2</sub>-emissions combined: 204 g/km; CO<sub>2</sub>-class: G; (according to WLTP)<sup>2</sup></p>	Wheels	Alloy wheels 19 inch (Dark Sputtering) • Brake caliper colour black • Michelin tires
	<p>Petrol 2.0T Plus 8AT RWD 180 kW (245 PS) L8G1J / GX6</p> <p><b>50,980 €<sup>1</sup></b></p> <p>Genesis G70 Shooting Brake 2.0T RWD 180 kW (245 PS) petrol, 8-speed gearbox - energy consumption combined: 9 l/100 km; CO<sub>2</sub>-emissions combined: 204 g/km; CO<sub>2</sub>-class: G; (according to WLTP)<sup>2</sup></p>	Interior	Heated steering wheel • Metal pedals
	<p>Petrol 2.0T Plus 8AT AWD 180 kW (245 PS) L8G1K / GX8</p> <p><b>53,080 €<sup>1</sup></b></p> <p>Genesis G70 Shooting Brake 2.0T AWD 180 kW (245 PS) petrol, 8-speed gearbox - energy consumption combined 9.6 l/100 km; CO<sub>2</sub>-emissions combined: 217 g/km; CO<sub>2</sub>-class: G; (according to WLTP)<sup>2</sup></p>	Seats	Leather seat cover
		Convenience	ECS (Electronic Control Suspension) • Limited slip differential (only for RWD)

<sup>1</sup> All prices are retail prices of Genesis Motor Deutschland GmbH with delivery and registration fees, including VAT.

<sup>2</sup> For more information on official fuel/power consumption and CO<sub>2</sub>-emission data for new cars, please refer to the "Guide on the Fuel Economy, CO<sub>2</sub>-Emissions and Power Consumption of All New Passenger Car Models Offered for Sale on the German Market" published free of charge by DAT Deutsche Automobil Treuhand GmbH, Hellmuth-Hirth-Straße 1, D-73760 Ostfildern, Germany, <https://www.dat.de/co2>.

The consumption and emission values shown on the Genesis website are based on the Worldwide Harmonised Light Vehicles Test Procedure (WLTP). Further information on the WLTP measurement procedures can be found at <https://www.genesis.com/de/de/wltp.html#>.

# COLOURS AND TRIM

## EXTERIOR COLOURS – PREMIUM












Solid	Metallic	Pearl	Pearl Metallic	Matte
Alta White 0 €	Savile Silver 820 €	Makalu Grey 820 €	Capri Blue 820 €	Uyuni White 820 €
			Tasman Blue 820 €	Vatna Grey 820 €
			Kawah Blue 820 €	Vik Black 820 €
			Hallasan Green 820 €	Bond Silver 1,240 €
				Makalu Grey Matte 1,240 €

## EXTERIOR COLOURS – SPORT

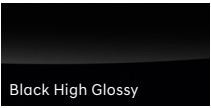


Solid	Metallic	Pearl	Pearl Metallic	Matte
Alta White 0 €	Savile Silver 820 €	Makalu Grey 820 €	Capri Blue 820 €	Uyuni White 820 €
			Tasman Blue 820 €	Vatna Grey 820 €
			Kawah Blue 820 €	Vik Black 820 €
			Hallasan Green 820 €	Cavendish Red 820 €
				Bond Silver 1,240 €
				Makalu Grey Matte 1,240 €

# COLOURS AND TRIM

## INTERIOR COLOURS

Premium (leatherette)	 Obsidian Black	 Fog Grey / Obsidian Black	
Premium Optional (leather)	 Obsidian Black	 Fog Grey / Obsidian Black	
Premium Optional (Luxury Pack)	 Obsidian Black	 Fog Grey / Obsidian Black	 Dune / Obsidian Black
Sport Standard (leather)	 Obsidian Black with Red Stitching		
Sport Optional (nappa leather)	 Obsidian Black with Red Stitching	 Fog Grey / Obsidian Black	 Sevilla Red / Obsidian Black

## TRIM

Premium (Standard)	 Black High Glossy
Premium (Optional)	 Aluminum Diamond Pattern
Sport	 Aluminum Sport dark stripe pattern

Some illustrations show optional equipment.



# WHEELS AND TYRES



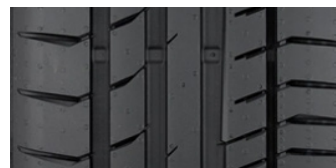
18" Alloy  
Light Metallic  
Premium Standard



18" Alloy  
Dark Hyper Silver  
Premium Optional



18" Alloy  
Rear Steel Grey  
Premium Optional



Summer  
ContiSportContact 5  
225/45 R18 95 Y XL

The image shows a standard European energy label for a tyre. At the top left is the European Union flag and the word "ENERGY" with a lightning bolt icon. To the right is a QR code. Below this, the brand "Continental" and the number "0358511" are listed. The tyre specification "225/45 R 18 95 Y XL" and the class "C1" are also present. The label features two sets of performance scales: one for rolling resistance (left) and one for wet grip (right). The rolling resistance scale has five levels (A to E) with a black arrow pointing to 'C'. The wet grip scale has five levels (A to E) with a black arrow pointing to 'A'. At the bottom, there is a noise level indicator showing a speaker icon with "72 dB" and a scale from A to C. A small vertical number "2020/749" is located at the bottom right corner of the label.

# WHEELS AND TYRES



19" Alloy  
Dark Sputtering  
Premium Optional  
Sport Optional



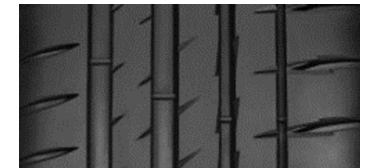
19" Alloy  
Dark Sputtering  
Sport Standard



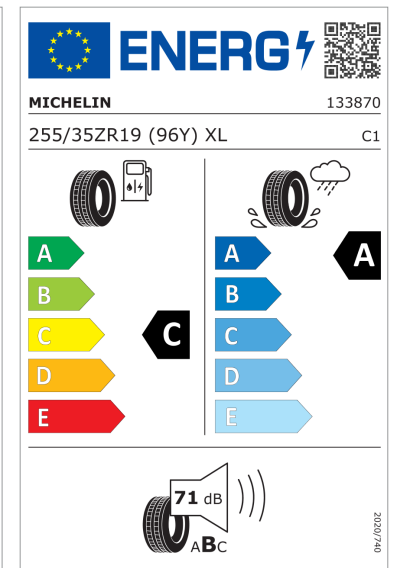
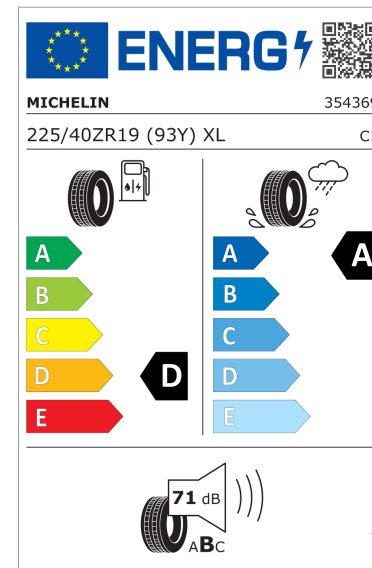
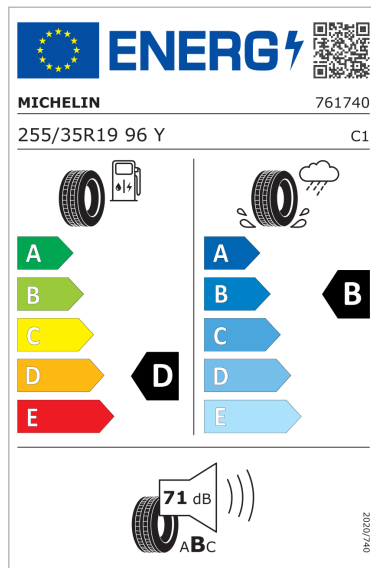
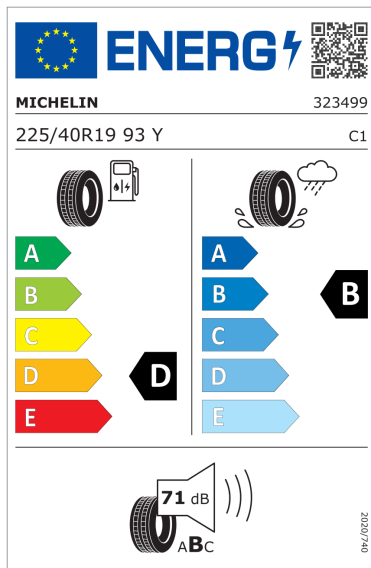
19" Alloy  
Grey Matt  
Sport Optional



Petrol  
Summer  
Pilot Sport 4 (Pilot Sport 4 S on Sport)  
225/40 R19 93 Y (FW)  
255/35 R19 96 Y (RW)



Diesel  
Summer  
Pilot Sport 4  
225/40ZR19 93 Y XL (FW)  
255/35ZR19 96 Y XL (RW)



## OPTIONAL EQUIPMENT

### Available extras and packs

<b>Premium &amp; Sport</b>	<b>Innovation Pack</b>	Dual front LED headlamps (low & high projection) with adaptive driving beam • 12.3 inch dashboard cluster 3D TFT display • Head-up display • SVM (Surround View Monitor) • BVM (Blind-spot View Monitor)	2,940 €
	<b>Spare tire</b>	Temporary spare tire	40 €
	<b>Sunroof</b>	Electric sunroof	1,060 €
	<b>Comfort Seat Pack</b>	Electric tilt & telescopic steering wheel with memory function • Memory function for driver seat • Air support system (driver) • Electric lumbar support for passenger • Walk-in device (front passenger seat controls from 2nd row) • Electric cushion extension (driver) • Electric side bolster (driver) • Heated seats (rear) • Ventilated seats (front)	2,350 €
	<b>Lexicon Audio System</b>	Lexicon audio system • Speakers rear package tray • Tweeter (front & rear), external amp (mid) & center (front) speaker	870 €
<b>Additional options only for Premium</b>	<b>Seat covering</b>	Leather seat covering • Aluminium interior garnish	770 €
	<b>Wheels</b>	Alloy wheels 18 inch (Dark Hyper Silver or Rear Steel Grey)	330 €
	<b>Luxury Pack</b>	Alloy wheels 19 inch (Dark Sputtering) • Michelin tire • ECS (Electronic control suspension) • Nappa leather seat cover • Suede handling • Suede A/B/C pillars • Suede sunvisor (driver & passenger) • Heated steering wheel • Aluminium interior garnish	4,880 €
<b>Additional options only for Sport</b>	<b>Wheels</b>	Alloy wheels 19 inch (Dark Sputtering or Grey Matt)	400 €
	<b>Nappa Leather Seat Pack</b>	Nappa leather seat cover • Suede headlining • Suede A/B/C pillars • Suede sunvisor (driver & passenger)	2,720 €

## TECHNICAL SPECIFICATIONS – PETROL

### BODY

	2.0T Plus 8AT RWD	2.0T Plus 8AT AWD
No. of doors / seats	4 / 5	
Length / Width / Height (running order)	4685 mm / 1850 mm / 1400 mm	
Wheelbase	2835 mm	
Track, front / rear	1592 mm / 1596 mm	
Overhang, front / rear	805 mm / 1045 mm	
Minimum ground clearance	130 mm	
Minimum turning circle	11 m	
Fuel tank capacity	60 l	
Mass in running order (minimum)	1727 kg	1792 kg
Max. laden mass	2175 kg	2235 kg
Max. mass on each axle, front / rear	1115 kg / 1220 kg	
Trunk volume (up to rear window):	403 l	
Trunk volume (behind rear seats):	465 l	
Trunk volume (folded rear seats):	1535 l	

### TRANSMISSION

	2.0T Plus 8AT RWD	2.0T Plus 8AT AWD
Transmission Type of Gearbox	8 speed automatic	
Gear ratios: I	3.964	
Gear ratios: II	2.468	
Gear ratios: III	1.610	
Gear ratios: IV	1.176	
Gear ratios: V	1.000	
Gear ratios: VI	0.832	
Gear ratios: VII	0.652	
Gear ratios: VIII	0.565	
Gear ratios: Rev	2.273	

### DRIVING DYNAMICS AND SAFETY

	2.0T Plus 8AT RWD	2.0T Plus 8AT AWD
Suspension type, front	Macpherson Strut	
Suspension type, rear	Multi Link	
Brake type, front	1 pot-caliper brake, $\Phi$ 345 mm 4 pot-caliper brake, $\Phi$ 350 mm (Brembo)	
Brake type, rear	1 pot-caliper brake, $\Phi$ 330 mm 2 pot-caliper brake, $\Phi$ 340 mm (Brembo)	
Steering	R-MDPS, Rack & Pinion	
Steering ratio	12.5	
Tyres, front / rear	225/45 R18 / 225/45 R18 225/40ZR19 / 255/35ZR19	
Rims, front / rear	8.0J x 18 / 8.0J x 18 8.0J x 19 / 8.5J x 19	

### ENGINE

	2.0T Plus 8AT RWD	2.0T Plus 8AT AWD
Cylinder config./valves in-line	I4 / 16-VALVE	
Displacement	1998 cm <sup>3</sup>	
Bore x Stroke	86 mm x 86 mm	
Max. output	180 kW (245 PS) / 6200 rpm	
Max. torque	353 Nm / 1450–3500 rpm	

### PERFORMANCE

	2.0T Plus 8AT RWD	2.0T Plus 8AT AWD
Acceleration 0–100 km/h	6.4 sec	6.9 sec
Acceleration 80–120 km/h	4.7 sec	5.1 sec
Top speed	235 km/h	
Noise level, moving	69 dB(A)	

### FUEL CONSUMPTION AND EMISSIONS - WLTP\*

	2.0T Plus 8AT RWD	2.0T Plus 8AT AWD
Combined (low/high – l/100 km)	8.5 / 9.0	9.3 / 9.6
Combined CO <sub>2</sub> (low/high – g/km)	194 / 204	212 / 217
LOW phase (low/high – l/100 km)	13.1 / 13.3	13.8 / 14.1
MID phase (low/high – l/100 km)	8.2 / 8.7	9.2 / 9.5
HIGH phase (low/high – l/100 km)	7.1 / 7.5	8.0 / 8.1
EXTRA HIGH phase (low/high – l/100 km)	8.2 / 8.7	8.9 / 9.2
LOW phase (low/high – g/km)	297 / 302	314 / 319
MID phase (low/high – g/km)	185 / 198	208 / 216
HIGH phase (low/high – g/km)	162 / 171	182 / 184
EXTRA HIGH phase (low/high – g/km)	187 / 199	203 / 209
CO <sub>2</sub> -class (combined)	G	
Emission standard	Euro 6D	

\* The consumption and emission values shown on the Genesis website are based on the Worldwide Harmonised Light Vehicles Test Procedure (WLTP). Further information on the WLTP measurement procedures can be found at [www.genesis.com/de/en/wltp.html](http://www.genesis.com/de/en/wltp.html). The optional equipment you have selected during configuration may result in your configured model corresponding to a different approved vehicle type than a vehicle without the optional equipment. This may also cause deviations in the values for the configured model.

For more information on official fuel consumption and CO<sub>2</sub> emission data for new cars, please refer to the 'Guide on the Fuel Economy, CO<sub>2</sub> Emissions and Power Consumption of All New Passenger Car Models Offered for Sale on the German Market' published free of charge by DAT Deutsche Automobil Treuhand GmbH, Hellmuth-Hirth-Straße 1, D-73760 Ostfildern, Germany, [www.dat.de/co2/](http://www.dat.de/co2/).

Published in April 2024 | Prices are subject to change



## TECHNICAL SPECIFICATIONS – DIESEL

### BODY

	2.2 8AT RWD	2.2 8AT AWD
No. of doors/seats	4 / 5	
Length/width/height (running order)	4685 mm / 1850 mm / 1400 mm	
Wheelbase	2835 mm	
Track, front/rear	1592 mm / 1596 mm	
Overhang, front/rear	805 mm / 1045 mm	
Minimum ground clearance	130 mm	
Minimum turning circle	11 m	
Fuel tank capacity	60 l	
Mass in running order (minimum)	1832 kg	1897 kg
Max. laden mass	2275 kg	2335 kg
Max. mass on each axle, front/rear	1115 kg / 1220 kg	
Trunk volume (up to rear window):	403 l	
Trunk volume (behind rear seats):	465 l	
Trunk volume (folded rear seats):	1535 l	

### TRANSMISSION

	2.2 8AT RWD	2.2 8AT AWD
Transmission Type of Gearbox	8 speed automatic	
Gear ratios: I	3.964	
Gear ratios: II	2.468	
Gear ratios: III	1.610	
Gear ratios: IV	1.176	
Gear ratios: V	1.000	
Gear ratios: VI	0.832	
Gear ratios: VII	0.652	
Gear ratios: VIII	0.565	
Gear ratios: Rev	2.273	

### DRIVING DYNAMICS AND SAFETY

	2.2 8AT RWD	2.2 8AT AWD
Suspension type, front	Macpherson Strut	
Suspension type, rear	Multi Link	
Brake type, front	1 pot-caliper brake, $\Phi$ 320 mm 4 pot-caliper brake, $\Phi$ 350 mm (Brembo)	
Brake type, rear	1 pot-caliper brake, $\Phi$ 314 mm 2 pot-caliper brake, $\Phi$ 340 mm (Brembo)	
Steering	R-MDPS, Rack & Pinion	
Steering ratio	12.5	
Tyres, front / rear	225/50 R17 / 225/50 R17 225/45 R18 / 225/45 R18 225/40ZR19 / 255/35ZR19	
Rims, front / rear	7.0J x 17 / 7.0J x 17 8.0J x 18 / 8.0J x 18 8.0J x 19 / 8.5J x 19	

### ENGINE

	2.2 8AT RWD	2.2 8AT AWD
Cylinder config./valves in-line	I4 / 16-VALVE	
Displacement	2199 cm <sup>3</sup>	
Bore x Stroke	85.4 mm x 96 mm	
Compression ratio	16	
Max. output	147 kW (200 PS) / 3800 rpm	
Max. torque	440 Nm / 1750–2750 rpm	

### PERFORMANCE

	2.2 8AT RWD	2.2 8AT AWD
Acceleration 0–100 km/h	7.7 sec	8.2 sec
Acceleration 80–120 km/h	5.8 sec	6.2 sec
Top speed	225 km/h	
Noise level, moving	69 dB(A)	

### FUEL CONSUMPTION AND EMISSIONS - WLTP\*

	2.2 8AT RWD	2.2 8AT AWD
Combined (low/high – l/100 km)	6.9 / 7.1	7.6 / 7.8
Combined CO <sub>2</sub> (low/high – g/km)	180 / 186	199 / 204
LOW phase (low/high – l/100 km)	9.2 / 9.4	10.1 / 10.5
MID phase (low/high – l/100 km)	6.8 / 7.1	7.6 / 7.8
HIGH phase (low/high – l/100 km)	5.9 / 6.2	6.6 / 6.7
EXTRA HIGH phase (low/high – l/100 km)	6.9 / 7.0	7.5 / 7.7
LOW phase (low/high – g/km)	242 / 247	265 / 276
MID phase (low/high – g/km)	178 / 186	200 / 204
HIGH phase (low/high – g/km)	154 / 162	173 / 177
EXTRA HIGH phase (low/high – g/km)	180 / 184	197 / 201
CO <sub>2</sub> -class (combined)	G	
Emission standard	Euro 6D	

\* The consumption and emission values shown on the Genesis website are based on the Worldwide Harmonised Light Vehicles Test Procedure (WLTP). Further information on the WLTP measurement procedures can be found at [www.genesis.com/de/en/wltp.html](http://www.genesis.com/de/en/wltp.html). The optional equipment you have selected during configuration may result in your configured model corresponding to a different approved vehicle type than a vehicle without the optional equipment. This may also cause deviations in the values for the configured model.

For more information on official fuel consumption and CO<sub>2</sub> emission data for new cars, please refer to the 'Guide on the Fuel Economy, CO<sub>2</sub> Emissions and Power Consumption of All New Passenger Car Models Offered for Sale on the German Market' published free of charge by DAT Deutsche Automobil Treuhand GmbH, Hellmuth-Hirth-Straße 1, D-73760 Ostfildern, Germany, [www.dat.de/co2/](http://www.dat.de/co2/).