

# GENESIS G70 SHOOTING BRAKE



All prices are retail prices of Genesis Motor Switzerland AG including delivery and VAT, excluding registration fees. Including our 5 Year Care Plan and 5 years' warranty, according our 5 year Care Plan and warranty terms and conditions.

## GENESIS G70 SHOOTING BRAKE

Model Line

Engine

Colour

Optional Equipment

Model Line	Price	Main standard features
<b>Sport</b>	Diesel 2.2 8AT AWD 147 kW (200 PS) L8G1K / DX8 <b>60'100 CHF<sup>1</sup></b> Fuel consumption (combined): combined 7.8 l/100 km; CO <sub>2</sub> emissions (combined) 204 g/ km. Energy efficiency class: F. <sup>2</sup>	<p><b>Exterior</b></p> Sport appearance • Dual front LED headlamps (low & high projection) including high beam assist • Dual rear muffler (Single twin muffler for diesel) black paint & chrome coating (only on petrol) • Rear diffuser in body color (ONLY ON PETROL) • Electrochromatic outside rearview mirror • LED Daytime Running Light (DRL) • LED rear stop lamp • LED rear fog lamps • LED rear combination lamp • Lighting backup guidelines • Electrochromatic outside rearview mirror with electrical folding and heating • Outside door handles in body color • Puddle lamp with logo • Upper chrome radiator grille (only for pearl or metallic exterior color) • Rear door glass + backlite glass (solar + privacy) <p><b>Wheels</b></p> Front and rear ventilated brake discs • Brembo premium brakes • Alloy wheels 19 inch (Dark Sputtering) • Brake caliper colour black • Tyre pressure monitoring system • Michelin tires <p><b>Interior</b></p> Centre armrest • Console storage box • Drink holder at centre armrest • Leather knob • Perforated leather with metal grain steering wheel • Soft paint interior trim • Fabric headlining • Fabric A/B/C pillars • Sunvisor (driver & passenger) • Heated steering wheel • Metal pedals <p><b>Seats</b></p> Electric lumbar support (driver) • Electric seat adjustment (driver & passenger) • Headrest adjustment (up/down/back/forth) • Electric height adjustment (driver) • Leatherette dashboard • Leather seat cover • 40:20:40 back folding for rear seats • Heated seats (front) <p><b>Safety</b></p> Driver & passenger airbag • Front thorax & pelvis, rear thorax & side curtain (FF & RR) airbag • Driver knee airbag • Centre side (front) airbag • ABS + ESC + HAC (Hill Assistant Control) + MCB (Multi-Collision Brake) • eCall <p><b>Advanced safety</b></p> SCC (Smart Cruise Control) with stop & start • Rear BCA (Blind-spot Collision-avoidance Assist) • LKA (Lane Keeping Assist) • FCA (Forward Collision-avoidance Assist) • ISLA (Intelligent Speed Limit Assist) • MSLA (Manual Speed Limit Assist) • LFA (Lane Following Assist) • HDA (Highway Driving Assist) <p><b>Infotainment</b></p> 10.25 inch screen with navigation, DAB radio & Genesis Connected Services • Apple Carplay & Android Auto • Speakers front door • Speakers rear door low • Tweeter • Steering wheel audio remote control • Bluetooth voice recognition <p><b>Convenience</b></p> Manual tilt & telescopic steering wheel • EPB (Electric Parking Brake) with autohold • ISOFIX child anchor: upper & lower (rear) • Temporary Mobility Kit (TMK) • Auto headlights & dusk sensor • Front side laminated glass • Windshield acoustic film • Smart key & button start • Immobilizer • Central door lock driver's control • 8 inch dashboard cluster TFT display • Electrochromatic interior mirror (ECM) with homelink • Individual drive mode • Paddle shifter • Front & rear parking sensors • RVM (Rearview Monitor camera) with dynamic guidelines on screen • Rain sensor • 12 V power outlet for front • USB charger console inside (1 port) • Wireless phone charger • 1 USB charger in front • Rear USB charger console outside (2 ports) • Front air condition with dual zone adjustment • Auto window defogger • Auto up/down windows • Seat occupant detection • Premium interior cabin filter • Air purification • Electric rear tailgate opening • ECS (Electronic Control Suspension)
	Petrol 2.0T Plus 8AT AWD 180 kW (245 PS) L8G1K / GX8 <b>62'500 CHF<sup>1</sup></b> Fuel consumption (combined): combined 9.6 l/100 km; CO <sub>2</sub> emissions (combined) 217 g/km. Energy efficiency class: G. <sup>2</sup>	

<sup>1</sup> Consumption and CO<sub>2</sub> information, efficiency classes and other technical information can be found on page 5, 6 and 7.

<sup>2</sup> The values are based on the Worldwide Harmonised Light Vehicles Test Procedure (WLTP). Further information on the WLTP measurement procedure can be found at <https://www.genesis.com/ch/en/wltp.html>

# COLOURS AND TRIM


## EXTERIOR COLOURS – SPORT

Solid	Metallic	Pearl	Pearl Metallic	Matte
Alta White 0 CHF	Savile Silver 920 CHF	Makalu Grey 920 CHF	Capri Blue 920 CHF	Uyuni White 920 CHF
			Tasman Blue 920 CHF	Vatna Grey 920 CHF
			Kawah Blue 920 CHF	Vik Black 920 CHF
			Hallasan Green 920 CHF	Cavendish Red 920 CHF
				Bond Silver 1390 CHF
				Makalu Grey Matte 1390 CHF

## INTERIOR COLOURS

<p>Sport Standard (leather)</p>	 <p>Obsidian Black with Red-Stitching</p>		
<p>Sport Optional (nappa leather)</p>	 <p>Obsidian Black with Red-Stitching</p>	 <p>Fog Grey / Obsidian Black</p>	 <p>Sevilla Red / Obsidian Black</p>

## TRIM

<p>Sport</p>	 <p>Aluminum Sport dark stripe pattern</p>
--------------	---

Some illustrations show optional equipment.

WHEELS AND TYRES



19" Alloy  
Dark Sputtering  
Sport Optional



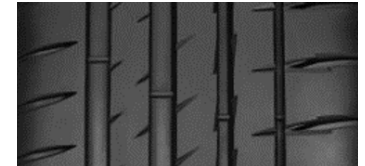
19" Alloy  
Dark Sputtering  
Sport Standard



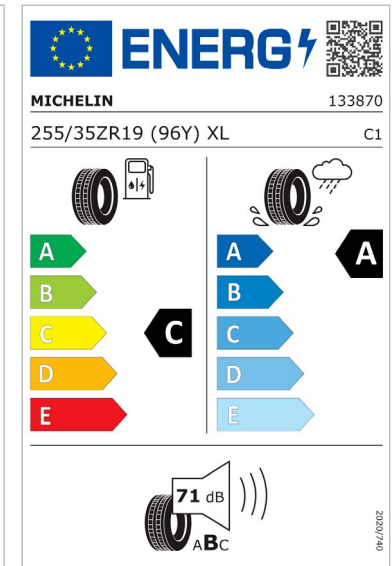
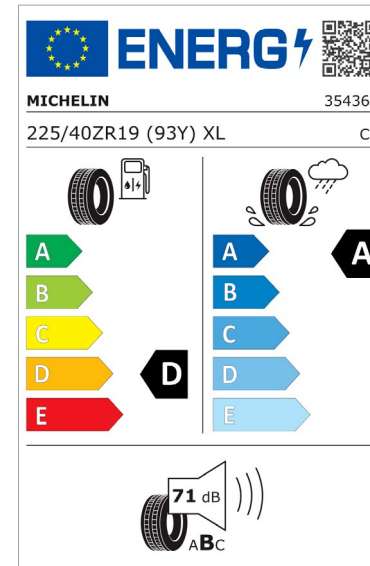
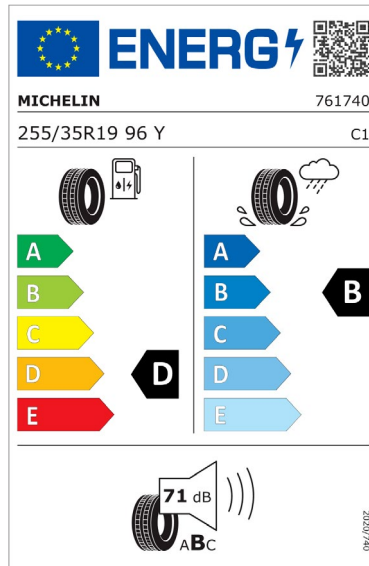
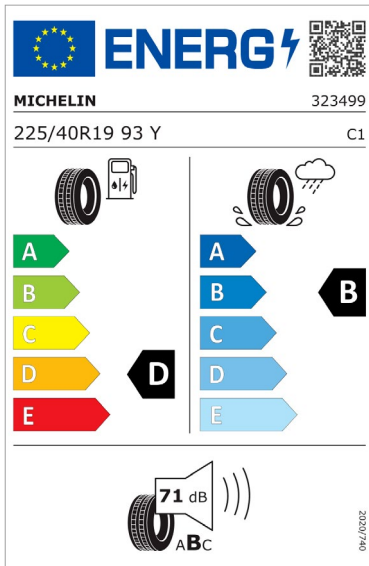
19" Alloy  
Grey Matt  
Sport Optional



Petrol  
Summer  
Pilot Sport 4 (Pilot Sport 4 S on Sport)  
225/40 R19 93 Y (FW)  
255/35 R19 96 Y (RW)



Diesel  
Summer  
Pilot Sport 4  
225/40ZR19 93 Y XL (FW)  
255/35ZR19 96 Y XL (RW)



## OPTIONAL EQUIPMENT

### Available extras and packs

#### Sport

<b>Innovation Pack</b>	Dual front LED headlamps (low & high projection) with adaptive driving beam • 12.3 inch dashboard cluster 3D TFT display • Head-up display • SVM (Surround View Monitor) • BVM (Blind-spot View Monitor)	2'940 CHF
<b>Comfort Seat Pack</b>	Electric tilt & telescopic steering wheel with memory function • Memory function for driver seat • Air support system (driver) • Electric lumbar support for passenger • Walk-in device (front passenger seat controls from 2nd row) • Electric cushion extension (driver) • Electric side bolster (driver) • Heated seats (rear) • Ventilated seats (front)	2'630 CHF
<b>Lexicon Audio System</b>	Lexicon audio system • Speakers rear package tray • Tweeter (front & rear), external amp (mid) & center (front) speaker	970 CHF
<b>Spare tire</b>	Temporary spare tire	40 CHF
<b>Sunroof</b>	Electric sunroof	1'190 CHF
<b>Wheels</b>	Alloy wheels 19 inch (Dark Sputtering or Grey Matt)	450 CHF
<b>Nappa Leather Seat Pack</b>	Nappa leather seat cover • Suede headlining • Suede A/B/C pillars • Suede sunvisor (driver & passenger)	3'050 CHF

## TECHNICAL SPECIFICATIONS – PETROL

### BODY

	2.0T Plus 8AT AWD
No. of doors / seats	4 / 5
Length / Width / Height (running order)	4685 mm / 1850 mm / 1400 mm
Wheelbase	2835 mm
Track, front / rear	1592 mm / 1596 mm
Overhang, front / rear	805 mm / 1045 mm
Minimum ground clearance	130 mm
Minimum turning circle	11 m
Fuel tank capacity	60 l
Mass in running order (minimum)	1792 kg
Max. laden mass	2235 kg
Max. mass on each axle, front / rear	1115 kg / 1220 kg
Trunk volume (up to rear window):	403 l
Trunk volume (behind rear seats):	465 l
Trunk volume (folded rear seats):	1535 l

### TRANSMISSION

	2.0T Plus 8AT AWD
Transmission Type of Gearbox	8 speed automatic
Gear ratios: I	3.964
Gear ratios: II	2.468
Gear ratios: III	1.610
Gear ratios: IV	1.176
Gear ratios: V	1.000
Gear ratios: VI	0.832
Gear ratios: VII	0.652
Gear ratios: VIII	0.565
Gear ratios: Rev	2.273

### DRIVING DYNAMICS AND SAFETY

	2.0T Plus 8AT AWD
Suspension type, front	Macpherson Strut
Suspension type, rear	Multi Link
Brake type, front	4 pot-caliper brake, $\Phi$ 350 mm (Brembo)
Brake type, rear	2 pot-caliper brake, $\Phi$ 340 mm (Brembo)
Steering	R-MDPS, Rack & Pinion
Steering ratio	12.5
Tyres, front / rear	225/40ZR19 / 255/35ZR19
Rims, front / rear	8.0J x 19 / 8.5J x 19

### ENGINE

	2.0T Plus 8AT AWD
Cylinder config./valves in-line	I4 / 16-VALVE
Displacement	1998 cm <sup>3</sup>
Bore x Stroke	86 mm x 86 mm
Max. output	180 kW (245 PS) / 6200 rpm
Max. torque	353 Nm / 1450–3500 rpm

### PERFORMANCE

	2.0T Plus 8AT AWD
Acceleration 0–100 km/h	6.9 sec
Acceleration 80–120 km/h	5.1 sec
Top speed	235 km/h
Noise level, moving	69 dB(A)

### FUEL CONSUMPTION AND EMISSIONS - WLTP\*

	2.0T Plus 8AT AWD
Combined (low/high – l/100 km)	9.3 / 9.6
Combined (low/high – g/km)	212 / 217
LOW phase (low/high – l/100 km)	13.8 / 14.1
MID phase (low/high – l/100 km)	9.2 / 9.5
HIGH phase (low/high – l/100 km)	8.0 / 8.1
EXTRA HIGH phase (low/high – l/100 km)	8.9 / 9.2
Gasoline equivalent	-
LOW phase (low/high – g/km)	314 / 319
MID phase (low/high – g/km)	208 / 216
HIGH phase (low/high – g/km)	182 / 184
EXTRA HIGH phase (low/high – g/km)	203 / 209
CO <sub>2</sub> Emissions from the production of carburant	50.59
Combined Electricity Consumption	-
Energy Efficiency Class	G
Average CO <sub>2</sub> Emissions of all models offered in Switzerland	122 g/km
Provisional CO <sub>2</sub> Emissions for models available in Switzerland	118 g/km
Emission standard	Euro 6D

\* The consumption and emission values shown on the Genesis website are based on the Worldwide Harmonised Light Vehicles Test Procedure (WLTP). Further information on the WLTP measurement procedures can be found at <https://www.genesis.com/de/en/wltp.html>.

## TECHNICAL SPECIFICATIONS – DIESEL

### BODY

	2.2 8AT AWD
No. of doors/seats	4 / 5
Length/width/height (running order)	4685 mm / 1850 mm / 1400 mm
Wheelbase	2835 mm
Track, front/rear	1592 mm / 1596 mm
Overhang, front/rear	805 mm / 1045 mm
Minimum ground clearance	130 mm
Minimum turning circle	11 m
Fuel tank capacity	60 l
Mass in running order (minimum)	1897 kg
Max. laden mass	2335 kg
Max. mass on each axle, front/rear	1115 kg / 1220 kg
Trunk volume (up to rear window):	403 l
Trunk volume (behind rear seats):	465 l
Trunk volume (folded rear seats):	1535 l

### TRANSMISSION

	2.2 8AT AWD
Transmission Type of Gearbox	8 speed automatic
Gear ratios: I	3.964
Gear ratios: II	2.468
Gear ratios: III	1.610
Gear ratios: IV	1.176
Gear ratios: V	1.000
Gear ratios: VI	0.832
Gear ratios: VII	0.652
Gear ratios: VIII	0.565
Gear ratios: Rev	2.273

### DRIVING DYNAMICS AND SAFETY

	2.2 8AT AWD
Suspension type, front	Macpherson Strut
Suspension type, rear	Multi Link
Brake type, front	4 pot-caliper brake, $\Phi$ 350 mm (Brembo)
Brake type, rear	2 pot-caliper brake, $\Phi$ 340 mm (Brembo)
Steering	R-MDPS, Rack & Pinion
Steering ratio	12.5
Tyres, front / rear	225/40ZR19 / 255/35ZR19
Rims, front / rear	8.0J x 19 / 8.5J x 19

### ENGINE

	2.2 8AT AWD
Cylinder config./valves in-line	14 / 16-VALVE
Displacement	2199 cm <sup>3</sup>
Bore x Stroke	85.4 mm x 96 mm
Compression ratio	16
Max. output	147 kW (200 PS) / 3800 rpm
Max. torque	440 Nm / 1750–2750 rpm

### PERFORMANCE

	2.2 8AT AWD
Acceleration 0–100 km/h	8.2 sec
Acceleration 80–120 km/h	6.2 sec
Top speed	225 km/h
Noise level, moving	69 dB(A)

### FUEL CONSUMPTION AND EMISSIONS - WLTP\*

	2.2 8AT AWD
Combined (low/high – l/100 km)	7.6 / 7.8
Combined CO <sub>2</sub> (low/high – g/km)	199 / 204
LOW phase (low/high – l/100 km)	10.1 / 10.5
MID phase (low/high – l/100 km)	7.6 / 7.8
HIGH phase (low/high – l/100 km)	6.6 / 6.7
EXTRA HIGH phase (low/high – l/100 km)	7.5 / 7.7
Gasoline equivalent (l/100 km)	8.44
LOW phase (low/high – g/km)	265 / 276
MID phase (low/high – g/km)	200 / 204
HIGH phase (low/high – g/km)	173 / 177
EXTRA HIGH phase (low/high – g/km)	197 / 201
CO <sub>2</sub> Emissions from the production of carburant (g/km)	37.59
Combined Electricity Consumption	-
Energy Efficiency Class	F
Average CO <sub>2</sub> Emissions of all models offered in Switzerland	122 g/km
Provisional CO <sub>2</sub> Emissions for models available in Switzerland	118 g/km
Emission standard	Euro 6D

\* The consumption and emission values shown on the Genesis website are based on the Worldwide Harmonised Light Vehicles Test Procedure (WLTP). Further information on the WLTP measurement procedures can be found at <https://www.genesis.com/de/en/wltp.html>.

Published in January 2024 | Prices are subject to change

# GRAPHICAL REPRESENTATION OF THE ENERGY EFFICIENCY CLASSES

## PETROL 2.0T PLUS 8AT AWD

**+** **Energieetikette 2024**

<b>Modell</b>	<b>GENESIS G70 2.0 TGDI</b>
Antriebsart	Allrad
Leistung	180 kW / 245 PS
Leergewicht	1885 kg

---

**Verbrauch** **B** Benzin  
9.6 l/100 km

---

**CO<sub>2</sub>-Emissionen**

Dieses Modell  
217 g/km

0 g/km Ziel 118 g/km >250 g/km


---

**Energieeffizienz**

A  
B  
C  
D  
E  
F  
G **G**

Wellere Informationen finden Sie unter [www.verbrauchskatalog.ch](http://www.verbrauchskatalog.ch)

TC 15A15 (4E)



## DIESEL 2.2 8AT AWD

**+** **Energieetikette 2024**

<b>Modell</b>	<b>GENESIS G70 2.2 CRDI</b>
Antriebsart	Allrad
Leistung	147 kW / 200 PS
Leergewicht	1978 kg

---

**Verbrauch** **D** Diesel  
7.8 l/100 km

---

**CO<sub>2</sub>-Emissionen**

Dieses Modell  
204 g/km

0 g/km Ziel 118 g/km >250 g/km

---

**Energieeffizienz**

A  
B  
C  
D  
E  
F  
G **F**

Wellere Informationen finden Sie unter [www.verbrauchskatalog.ch](http://www.verbrauchskatalog.ch)

TC 15A20 (4E)

